



μ :

:159

()
:

: 2013- 2014

4
6
1.9
1.19
1.212
1.3	μ μ μ 15
2.18
2.1	μ 18
2.2	μ 20
2.3	μ μ 24
2.4	μ 26
3.30
3.130
3.235
4.	- 38
4.138
4.243
5.44

6. 47
6.1	$\mu\mu$ 47
6.2 47
6.3 52
6.4 53
7. 54
7.1	μ 54
7.2 56
7.3 56
7.3.1	μ 56
7.3.2	μ 59
8. 66
8.1 67
8.2	μ 69
8.3	μ 71
8.4	μ 73
8.5	μ 74
8.6	$\mu -$ 76
 77

μ , μ μ
 μ .

μ μ μ μ μ
 (. . .) μ μ μ ,
 μ μ μ . μ μ
 , μ (<http://www.who.int/cancer/en/>).

. μ
 . μ
 . « »
 . μ μ
 μ . (DNA) μ
 , μ , μ
 μ . μ
 μ , μ .
 μ μ μ , μ
 (<http://www.cancer.gov/cancertopics/cancerlibrary/what-is-cancer>).

. μ
 . μ
 μ μ μ
 μ . , , μ
 (<http://www.cancer.gov/cancertopics/cancerlibrary/what-is-cancer>)

μ . μ
 (<http://www.who.int/cancer/en/>).

μ
 . μ , μ , μ ,
 μ μ μ μ μ .
 μ , μ
 . μ

μ , μ , μ
 , μ μ
 μ . μ ,
 μ , , μ
 . μ μ
 , μ , μ μ
 μ μ μ .
 μ μ μ μ
 μ . , μ

(<http://www.cancer.gov/cancertopics/cancerlibrary/what-is-cancer>).

μ μ .
 8.2 μμ 2012
 . μ (1.59
 μμ), (745.000), μ (723.000),
 (694.000), (521.000)
 (400.000) (Ferlay et al., 2012). ,

AIDS, μ μ

(<http://www.moh.gov.gr/articles/news/1005-pagkosmia-hmera-kata-toy-karkinoy>).

μ , (24,4%) μ
 μ (29,4%),
 μ , ,
 - , , & (2011).
 μ μ .
 , 2004, 19 μ μ
 μ 209/100.000 μ 23 μ
 μ 108/100.000. , μ 9 (OECD,
 2007). μ μ
 μ μ . μ

μ (μ , 1998).

μ μ (Hodgkin's) μ μ μ . 2000-
2005 148.712 . μ
μ μ . μ
μ μ . μ
(, 2011).

μ μ . μ μ
μ , μ
μ . μ
μ μ μ μ μ .
μ , μ , μ , μ , μ ,
μ , μ μ μ
μ , μ , μ ,
μ , μ (Department of Health and Human Services,
2012. National Cancer Institute, 2009).

μ , μ , μ
μ , μ
μ (HBV),
C (HCV), μ (HPV)

μ

(<http://www.who.int/cancer/prevention/en>), μ

μ

μ μ . , μ μ

(<http://www.cancer.gov/cancertopics/pdq/prevention/overview/patient/page3>),

μ , μ .

, μ μ μ ,

μ μ μ μ

μ μ μ μ (<http://www.who.int/mediacentre/factsheets/fs297/en/>).

1.

1.1

, μ μ .

μ , μ , μ , μ μ

μ μ μ μ .

μ , / μ .

μ (Andersen & Simonelli, 2007).

μ
·
·
μ , , μ
μ μ
· , μ ,
μ μ μ

(<http://www.who.int/cancer/treatment/en/>).

μ
μ , μ μ μ
· μ μ μ
μ μ , μ
(Stiegelis, Ranchor, & Sanderman, 2004). , μ
μ μ , , (King, Nail, Kreamer, Strohl, &
Johnson, 1985), , μ μ
(Bansal et al., 2004).

μ μ 30% μ
μ , 80%
μ 55% μ
(Morrow, Roscoe, Hickok, Andrews, &
Matteson, 2002). - μ μ

μ μ μ μ
μ . ,
μ μ μ μ
μ μ μ . , , -
μ μ μ μ μ
μ μ μ μ μ

, μ - μ
 μ (Morrow & Hickok, 1993)

μ .

, μ , μ ,
 Hodgkin's μ μ μ - Hodgkin's, μ μ

μ , μ μ μ .

μ ,

μ (Trask et al., 2002).

μ μ μ μ ,

, . μ ,

μ μ . μ μ μ

(μ μ μ) /

(μ μ μ) μ μ

μ μ . μ μ μ ,

μ μ μ μ

μ μ μ μ μ

. μ μ , μ

μ

μ , μ μ

μ , μ ,

μ

μ .

, μ μ μ

μ μ , , μ

, μ (Winer & Sutton, 1994).

, μ μ μ ,

μ ,

μ μ (Trask et al., 2002).

, , μ μ . μ
 , μ μ
 , . μ ,
 μ , μ
 . μ , μ
 μ μ 90%
 μ μ
 μ μ ,
 . μ
 μ μ μ
 , 80% ,
 (<http://www.who.int/mediacentre/factsheets/fs297/en/>).

1.2

μ ,
 « μ », μ μ
 , μ (Weisman &
 Worden, 1976).

μ
 . μ , μ μ
 μ (French, Maissi, & Marteau,
 2004). μ ,

, , (Andersen & Simonelli,
 2007). μ Cantor, Volk, Cass, Gilani, & Spann (2002)

μ μ
 . μ ,
 (PSA testing), ,
 μ , μ .

, μ
μ μ .

μ μ μ μ μ . μ
μ μ μ 5% 50%
μ

(Stommel, Kurtz, Given, & Given, 2004).

μ μ ,
μ , μ ,
μ , - μ ,
μ , , μ ,
μ μ , ,
μ μ μ μ μ μ

(Stommel et al., 2004. Epping-Jordan et al., 1999).

, μ
μ
μ μ μ μ
μ μ
μ μ (Phipps, 2002),
μ μ . μ
μ μ , μ
μ μ , μ
μ μ (Beanlands et al., 2003).
μ

μ (Phipps,
2002) μ
μ

μ μ , μ ,
 , μ μ
 μ . , μ μ
 μ μ μ , μ , μ ,
 μ μ μ , μ μ μ
 μ μ μ μ μ μ
 , μ , μ μ

(Stein, Syrijala, & Andrykowski, 2008. Foster, Wright, Hill, Hopkinson, & Roffe, 2009. Harrington, Hansen, Moskowitz, Todd, & Feuerstein, 2010).

, μ
 , μ - μ , μ μ
 μ , μ μ ,
 μ μ μ μ μ , μ ,
 μ μ (Tedeschi & Calhom, 1996).

1.3 μ μ μ

30% μ
 - ,
 μ μ μ
[\(http://www.who.int/cancer/prevention/en/\)](http://www.who.int/cancer/prevention/en/).

, μ . μ , μ
 μ μ μ μ μ ,
 μ μ (Smith, Cokkinides, & Eyre, 2003), μ

(http://www.who.int/cancer/prevention/en/).
 (Smith, Cokkinides, & Eyre, 2003),
 (PSA), (CT),
 (Smith, Cokkinides, & Eyre, 2006),
 (HPV) (HBV)
 (http://www.who.int/cancer/prevention/en/).
 (Blanks, Moss, McGahan,
 Quinn, & Babb, 2000).

(American Cancer Society & Eddy, 1980).
 (Smith, Cokkinides, & Eyre,
 2006).

(Davis, Lee, Jarvis, Zorbas, & Redman, 2003.
 Erwin et al., 2003).
 (

, μμ , μ , ,
 , (Bendelow, Williams, & Oakley, 1996).
 μ μ μ μ μ
 . μ ,
 μ μ μ , μ μ
 , μ
 μ μ , μ μ
 μ (Institute of Medicine,
 2001).
 μ , μ μ
 μ μ . μ
 μ μ ,
 μ μ μ
 μ , μ μ - (Rimer,
 Briss, Zeller, Chan, & Woolf, 2004). μ μ
 μ μ μ
 , μ ,
 μ μ ,
 μ μ μ
 μ μ μ
 ,
 μ μ (Smith,
 Cokkinides, & Eyre, 2006).
 μ μ ,
 μ μ ,
 ,
 μ (Briss et al., 2004). μ μ μ
 μ μ
 , μ μμ

μ
 , μ μ μ μ
 (Smith, Cokkinides, & Eyre, 2006).

, μ μ
 μ . μ
 . ,
 μ μ μ μ μ ,
 μ , ,
 , μ μ
 . , ,
 μ μ μ , μ μ
 μ μ . μ μ μ ,
 μ - μ μ
 . μ μ μ
 μ ,
 μ μ μ μ ,
 μ μ μ
 μ
 (<http://www.who.int/cancer/detection/en/>).

2.

2.1 μ

μ μ μ μ μ μ
 μ μ ,
 μ μ μ .
 μ μ μ « μ »,
 μ μ ,
 μ ,
 μ μ

μ μ , ,
 μ μ μ μ μ μ
 μ μ μ μ μ
 μ μ

(Leventhal et al., 2005).

2.2 μ

μ μ
 μ , μ
 μ μ
 μ μ μ
 (μ , μ) , μ

μ μ μ μ
 μ μ μ μ μ μ
 μ μ μ μ μ μ μ μ
 Fan, Eiser, Ho & Lin (2013),

μ μ μ μ μ μ μ μ

μ μ
 μ μ μ μ μ μ μ μ

μ μ μ μ

(Moss-Moris et al., 2002; Rutter & Rutter, 2002).

(Taylor, Repetti, & Seeman, 1997)

μ μ μ ,

μ .

μ ,

μ

μ « μ μ μ

μ μ ».

μ « μ

μ ».

μ μ

μ

μ

μ

μ

(Leventhal et al., 2005).

μ

μ

μ .

, ,

μ μ

μ ,

μ

.

μ

μ μ

.

,

μ μ ,

μ

μ

μ

μ

μ

(Leventhal

et al., 2005).

μ

μ

,

μ « μ

»

μ μ μ

«

μ

μ

».

μμ

μ

μ

μ

μ μ

μ

μ

(Leventhal et al., 2005).

μ

,

(Lau & Hartman, 1983).

μ μ μ

μ

(Leventhal et al., 2005).

/

μ

μ

μ

μ

μ

,

μ «

μ

μ

μ μ

μ »,

μ

μ

μ

μ

μ

(Leventhal et al., 2005).

2.3

μ

μ

Leventhal et al. (1980)

μ

μ

μ

μ

«

»

μ

.

μ , μ

μ

μ

μ

μ

,

μ

μ

μ

μ

(Moss-Morris et al., 2002).

, μ

μ

μ

μ

μ

.

μ

μ

μ

μ

μ

(Lazarus & Folkman, 1984).

μ

μ μ

μ

μ

.

μ ,

μ

,

(μ

,

,

)

-

(Folkman, Lazarus, Dunkel-Schetter, DeLongis, & Gruen, 1986).

μ μ (Beasley, Thompson, & Davidson, 2003).

μ (μ , 2005). μ , μ μ μ

μ μ μ μ μ μ μ μ

μ μ (Gross, 1999). μ μ

μ , μ μ μ μ

μ μ μ μ (μ μ μ μ

μ μ μ μ μ μ μ μ

μ , μ μ μ μ μ μ μ μ

μ μ μ μ μ μ μ μ

μ μ μ μ μ μ μ μ

μ μ μ μ μ μ μ μ

μ μ μ μ μ μ μ μ

(Cameron & Leventhal, 2003. Cameron & Chan, 2008).

μ μ μ μ μ μ μ μ

μ μ μ μ μ μ μ μ

μ μ μ μ μ μ μ μ

μ μ μ μ μ μ μ μ

μ μ μ
 μ μ μ
 , μ
 , μ
 , μ μ μ
 μ .
 μ
 μ , « μ »
 μ .
 μ , μ Dempster et al. (2012), μ
 μ μ μ
 , μ
 μ ,
 μ . ,
 « » , ,
 .
 μ
 . μ μ
 μ μ
 μ μ μ μ
 μ , μ μ μ μ
 μ
 , ,
 μ . , μ
 μ ,
 μ μ μ
 . μ μ
 μ μ μ μ

μ μ μ ,
 .
 μ μ μ
 Scharloo et al. (2005) μ
 μ . μ μ ,
 μ μ μ μ μ μ μ
 . μ μ μ
 μ μ μ , μ μ
 , μ μ μ
 μ μ μ
 μ .
 , , μ
 μ
 μ μ μ μ . « »
 μ μ μ μ μ
 μ μ μ μ μ μ
 μ μ μ μ μ μ (Rehse & Pukrop, 2003).
 , μ μ μ μ μ
 μ , μ
 , -
 μ μ (Walker, Ristvedt, & Haughey, 2003. McLane, Jones, Lydiatt, Lydiatt, & Richards, 2003. Bjorklund, & Fridlund, 1999).
 μ , μ ,
 μ μ μ μ μ
 μ , (Cameron & Jago, 2008);
 μ μ
 μ Cameron, Booth, Schlatter, Ziginskas, &

Harman (2007)

μ μ , μ
 , μμ
 μ μμ μ μ .
 μ μ μ μ
 μ μ μ μ . μ
 μ μ μ , μ ,
 μ μ , μ
 ,
 μ , μμ μ
 , , μ . , ,
 μ
 μ μ . μ ,
 , , μμ μμ μ
 ,
 μ μ μ μ
 μ μ μ μ . , μμ
 (μ) μ
 μ μ μ μ
 .
 , μ
 μ μ μ μ
 μ μ

(Reid, Alberg, Klassen, Koch, & Samet, 2001)

(Scharloo et al., 2005. Kore & Blacklock,

2000).

μ ,

μ

μ

3.

3.1

μ μ .
μ μ ,
μ μ

(American Psychiatric Association [APA], 1994).

Grossarth-Maticek Eysenck (1990)

μ
μ , - μ
μ μ μ μ
μ

μ μ μ , μ μ
μ μ μ μ μ μ
μ μ μ μ μ μ

(Aldwin, Spiro, Levenson, & Cupertino, 2001).

μ μ μ μ μ μ
μ μ μ μ μ μ
μ μ μ μ μ μ

(Lemogne et al., 2013).

μ μ μ μ μ μ
μ μ μ μ μ μ

/
 (Perkins, Davidson, Leserman, Liao,
 & Evans, 1993).
 HIV (Trobst, Herbst, Masters, & Costa, 2002).
 D.
 D,
 D (Denollet, 2005).
 (Denollet, Schiffer, & Spek, 2010),
 (Mols & Denollet, 2010a)
 (Mols & Denollet, 2010b)
 D
 (Leventhal, Nerenz, & Steele, 1984).
 D

μ μ - ,
 μ μ
 (Mols, Thong, van de Poll-Franse, Roukema, & Denollet, 2012. Jellesma, 2008).

μ Mols, Denollet, Kaptein, Reemst, Thong (2012)
 μ μ D
 μ (),
 ($\mu\mu$), μ μ μ
 (). ,
 () μ (μ
). μ ,
 μ μ
 .

μ μ
 , μ μ μ
 , μ μ (Millar, Purushotham,
 McLatchie, George, & Murray, 2005). , μ μ
 μ μ μ
 μ μ . , μ μ

μ μ μ μ ,
 μ μ (Husson, Denollet,
 Oerlemans, & Mols, 2013). μ
 μ .

, , μ
 (Cohen et al., 1998. Nguyen-Michel, Unger, Hamilton, & Spruijt-Mertz, 2006)

, , $\mu\mu$ (Cook, Young, Taylor, &
 Bedford, 1998) (Saklofske, Austin, Galoway,

(Atkinson et al., 2000).

(Atkinson et al., 2000).

(Atkinson et al., 2000).

(Grant & Langan-Fox, 2006. Lemos-Giraldez & Fidalgo-Aliste, 1997. Marshall, Wortman, Vickers, Kusulas, & Hervig, 1994. Smith & Williams, 1992).

(Christensen et al., 2002)
(Brickman, Yount, Blaney, Rothberg, & De-Nour, 1996).

(Horsburgh, Beanlands, Locking-Cusolitto, Howe, & Watson, 2000).
Horsburgh (1999)

20%

Korotkov (2008),

(Lillberg, Verkasalo, Kaprio, Helenius, & Koskenvuo, 2002. Hansen, Floderus, Frederiksen, & Johansen, 2005)

(Hansen et al., 2005. Husson et al., 2013. Lemogne

3.2

Kissen Eysenck (1962),

«

»

(Hansen et al., 2005. Husson et al., 2013. Lemogne

et al., 2013. Lillberg et al., 2002. Millar et al., 2005) μ

Holterhues, Nijsten, van de Poll-Franse (2010) D. Mols,

μ μ μ
 μ
, μ ,
 μ μ .
, μ
 μ ,
, μ μ
.
 μ μ .

Nakaya (2010) μ μ μ ,
 μ 4631

μ μ μ
 μ μ μ (Schapiro et al.,
2001. Nakaya et al., 2003. Hansen et al., 2005. Lillberg et al., 2002. Bleiker et al., 2008)

-
 μ - μ μ .

, μ
 μ μ μ μ ,
 μ μ . μ
 μ ,
 μ μ (Lemogne et al., 2013). , μ ,

, μ
 μ . (Nakaya et al., 2010. Lemogne et al., 2013)
 μ μ μ μ

μ
 μ . μ
 , μ . μ ,
 μ μ μ
 μ , μ μ .
 Aarstad, Aarstad, Olofsson (2008) μ
 μ μ , μ
 μ μ
 μ .
 μ μ
 μ μ .
 μ μ .
 μ μμ ,
 μ , μ μ
 μ μ μ μ μ μ
 μ μ μ μ μ .
 μ μ μ ,
 μ , μ μ ,
 « » μ
 μ . μ , μ μ μ
 μ μ μ
 μ μ μ μ
 , μ , μ
 μ μ μ
 μ , μ μ

(Aarstad, Beisland, & Aarstad, 2012).

(Hislop, Waxler, Coldman, Elwood, & Kan, 1987) Ratcliffe, Dawson, Walker
 (1995) Hodgkin (2010)
 Hodgkin, Nakaya (2010)
 2006
 (Aldwin et al., 2001).

4.

4.1

(Hagedoorn et al., 2001. Germino, Fife, & Funk, 1995).
 (Hagedoorn et al., 2001).
 « μ » (Kayser, Watson, & Andrade, 2007).
 μ

30% μ μ

(Williamson & Schulz, 1995. Ybema, Kuijer, Buunk, DeJong, & Sanderman, 2001).

μ μ μ μ

μ μ

(Williamson & Schaffer,

2001), μ μ , μ

(Lebowitz et al., 1997). μ μ

μ Hodges, Humphris, & Macfarlane (2005)

μ μ

μ .

μ

μ

(Andersen & Simonelli, 2007).

μ μ μ μ

μ μ μ μ , μ

μ ,

, ,

μ μ μ ,

μ

(Lewis, 1986).

μ , μ μ μ

μ μ (Pitceathly &

Maguire, 2003).

μ Badr, Carmack, Kashy, Cristofanilli, & Revenson (2010)

μ μ μ

μ

μ
(Ussher & Sandoval, 2008)

(Hagedoorn, Buunk, Kuijer, Wobbes, & Sandermann, 2000). μ

(Zahlis & Shandis, 1991), μ
(Badr & Carmack Taylor, 2006)
μ (Kornblith, Anderson, & Cella, 1990).

Hagedoorn, Sanderman, Bolks, Tuinstra, & Coyne (2008)

μ μ - μ , μ
μ , μ μ
μ
μ , μ , -
μ « μ »
μ μ μ
μ
- . ,
, , , . ,
,

Ussher, Wong, & Perz (2010)

μ
- , μ
μ .
,
μμ
μ . μ μ
, μ
μ μ .
μ , , ,
μ μ , μ

. , μ μ
 μ . , μ μ
 , μ μ
 μ μ , μ
 . , μ μ μ
 μ μ , μ .
 μ
 μ , μ ,
 μ « μ
 μ μ ».
 μ ,
 ,
 . , μ
 μ - μ μ μ μ .
 μ , μ
 μ μ μ
 μ μ μ
 μ . , -
 μ - , μ μ
 μ .
 μ μ ,
 μ
 μ « » , « μ
 μ μ / » , « μ / » , «
 μ μ / » . μ ,

(Badr & Carmack Taylor, 2006)
(Dorval et al., 2005).

4.2

(Rabins, Fitting, Eastham, & Fetting, 1990. Nijboer, Tempelaar, Triemstra, van den Bos, & Sanderman, 2001), Alzheimer, Parkinson (Hooker, Monahan, Bowman, Frazier, & Shifren, 1998), (Bookwala & Schulz, 1998) (Reis, Andres, Gold, Markiewicz, & Gauthier, 1994) (Patrick & Hayden, 1999).

(Nijboer et al., 2001).

(Hagedoorn et al., 2008).

(Hagedoorn et al., 2001)

(Taylor, 2006)

(Taylor, 2006)

μ μ μ
(Kim, Duberstein, Sorensen, & Larson, 2005).

5.

μ μ μ
μ μ μ
μ μ μ

μ μ μ μ μ μ μ μ μ
μ μ μ μ μ μ μ μ μ
μ μ μ μ μ μ μ μ μ
μ μ μ μ μ μ μ μ μ
μ μ μ μ μ μ μ μ μ
μ μ μ μ μ μ μ μ μ

1.

2.

3.

μ μ μ μ μ μ μ μ μ

μ . μ , μ

μ

.

μ

μ

μ

μ

.

:

4.

μ

.

5.

μ

.

6.

μ

μ

μ

.

7.

μ

.

8.

μ

.

9.

μ

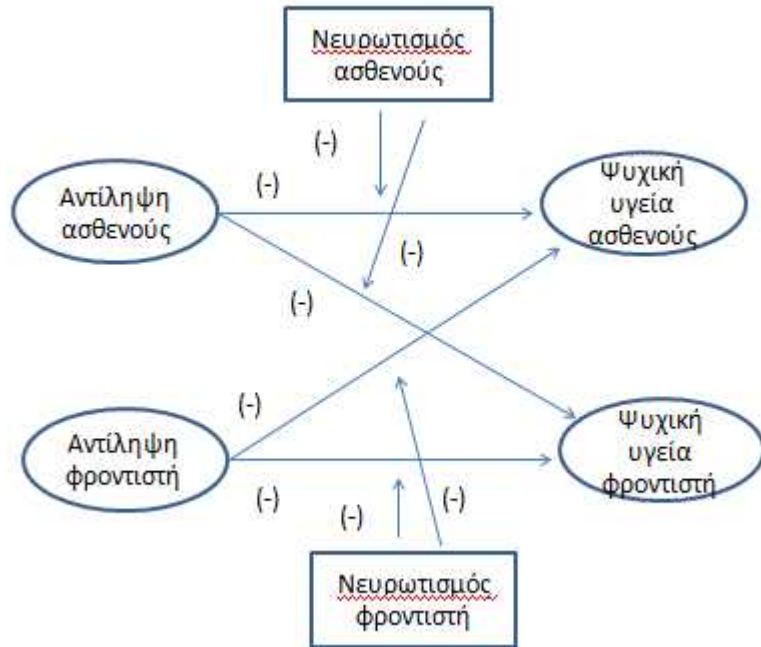
μ

μ

.

μ

μ 1.



μ 1.

μ

6.

6.1 μμ

μ 43 (86 μμ),

.

16 27 . μ

60,4 , μ μ 21 μ 84 .

μ (27,9%) μ μ

(14%) μ 2011.

9,3% μ , 46,5% , 9,3%

20,9% . μ

μ 37,2% 20,9% ..

μ 58,1% μ 16,3%

μ .

15 28 . μ

47,05 μ μ 20 μ

76 . 27,9% 23,3% ..

μ μ 25,6% ,

23,3% μ 23,3% / .

27,9% μ 53,5% μ .

6.2

.

Brief Illness Perception Questionnaire (Broadbent, Petrie, Main,
& Weinman, 2006), μ . . μ

μ μ <http://www.uib.no/ipq/pdf/B-IPO-Greek.pdf> .

μ μ μ ,

μ . μ

μ

μ μ , μ .
 μ μ μ Leventhal
 et al. (1984) μ , μ
 μ . , μ
 , μ (1 ,
 .. ; - :
 / ;), ,
 μ (1 , ..
 ; - :
 /);), , μ (1
 , .. ; -
 : /);),
 , μ
 μ (1 , ..
 , μ ; - :
 /);), (1 , ..
 μ μ ; - :
 / μ μ /);),
 μ (1 , ..
 μ ; - : μ
 /);), μ
 (1 , .. ; -
 : /);),
 μ , (1 , ..
 μ ; - :
 / μ);). , μ
 μ μ , μ
 μ ,

μ .
 μ μ μ μ μ
 Likert, μ .
 Cronbach a = ,74 =
 ,66.

μ Illness Perception Questionnaire
 μ ,
 μ μ μ , μ μ
 μ μ μ μ μ (Broadbent
 et al., 2006).

μ . μ
 μ μ μ μ
 – (μ , , μ ,
 , & , 2010). μ μ μ

μ , μ μ
 μ μ μ . μ
 μ . ,
 μ
 μ μ
 (. . μ) .
 Cronbach a μ μ = ,76.

μ ,
 μ μ μ μ μ
 , μ (. . μ μ) .
 Cronbach a μ μ =
 ,88.

(. . . μ μ).
 μ μ μ μ , Cronbach a= ,37
 μ .
 ,
 μ μ (. . .
 μ μ) . μ μ
 μ , Cronbach a= ,64 μ μ
 . μ
 ,
 μ (. . . μ μ) . μ
 μ μ , Cronbach a= ,06
 μ .
 μ μ μ μ
 Likert μ .
 .
 μ Short-Form 36 (SF-36) Health Survey
 (Anagnostopoulos, Niakas, & Pappa, 2005). μ μ
 μ μ .
 , μ . μ
 μ μ ,
 .
 , μ
 μ . μ μ 36
 μ μ μ Likert, μ μ
 .
 , μ μ
 μ (10 , . . . ,
 μ ; ; -

: ;)
 μ (5 , ... μ
 μ ; - :
 μ μ
 μ ;).
 μ μ μ
 , μ μ μ Cronbach
 a= ,95. μ μ μ
 Cronbach a= ,83 Cronbach a=
 ,74. μ μ .

μ . μ
 μ μ , Traits Personality Questionnaire
 5 (TPQue5) (Tsaousis & Kerpelis, 2004).

μ μ 75 ,
 , μ ,
 , μ .
 , 26 ,
 μ . μμ 101
 . μ

μμ μ μ μ
 Likert, μ / μ
 μ μ μ /μ
 μ . μ
 μ μ .
 Cronbach a μ μ = ,89
 = ,81.

6.4

μ
 μ μ
 μ μ $\mu - \mu$
 bootstrapped ,
 Preacher Hayes (2004, 2008).
 μ μ , 5000 μ
 μ μ
 $\mu\mu$ (a x b) $\mu . \mu$ μ $\mu\mu$
 μ μ a x b $\mu . \mu$ μ μ
 μ a x b μ ($\mu -$
 μ) . , 95% μ μ
 μ 2.5 97.7 μ μ μ
 μ a x b μ bootstrapped $\mu .$
 μ μ μ μ μ
 μ , $\mu\mu$ μ μ .
 μ μ μ
 μ μ μ .
 μ μ μ
 $\mu\mu$ μ μ
 μ , μ μ μ
 μ μ ,
 μ μ ,
 $\mu\mu$ μ
 $\mu\mu$. , Sobel test
 μ μ bootstrapped μ
 μ . μ μ μ

(Preacher & Hayes, 2004, 2008).

Windows.

(Kenny, 1996). Actor-Partner Interdependence Model (APIM. Kenny, Kashy, & Cook, 2006).

APIM

actor effect,

partner effect.

Kenny, Kash, Cook (2006)

MLwiN (Rasbash, Browne, Healy, Cameron, & Charlton, 2000).

7.

7.1

1.

1.

, μ μ (=43 , =86 μ)

				1	2	3	4	5	6	7	8	9
1.	, actor	33,2	16,1	_								
2.	, partner	42,3	12,4	,41**	_							
3.	μ	27,0	8,41	,77**	,39*	_						
4.	μ	34,9	8,50	-,31	-,07	,00	_					
5.	μ , actor	45,0	13,5	,46**	,18	,65**	-,04	_				
6.	μ , partner	42,3	9,5	,24	,33*	,25	,01	,07	_			
7.	, actor	286,9	92,4	-,68**	-,44**	-,77**	,16	-,64**	-,35*	_		
8.	, partner	255,7	86,1	-,34*	-,32*	-,39*	-,11	-,26	-,52**	,42**	_	
9.	μ , actor	517,5	348,7	-,54**	-,12	-,57**	,23	-,23	-,04	,50**	,09	_
μ : =												

*p<0.05, **p<0.01

μ (2)

μ

μ

(LLCI=-7,2391 & ULCI=-1,6279).

μ

μ

μ

μ

μ

μ

μ

μ

,

μ

μ

.

μ

μ

μ

.

μ

,

μ

μ

μ

μ

(LLCI= -4,6532 & ULCI= -1,3887).

μ

μ

(3)

μ

μ

μ

μ

(LLCI= -14,5793 & ULCI= -0,1173).

,

μ

,

μ

μ

μ

.

μ

μ

μ

2

3

μ

μ

μ

μ

μ

μ

.

2.

μ	μ	μ	Bootstrapping		
			95%	μ	
			μ	*	
			μ		
		-2,9435	0,8491	-4,7677	-1,3907
	μ	-0,1648	0,2668	-1,0030	0,1665
μ		-2,7788	0,8272	-4,6532	-1,3887

* μ μ bootstrapping (5000 bootstrap μ).

3.

μ	μ	μ	Bootstrapping		
			95%	μ	
			μ	*	
			μ		
		-9,6937	4,2263	-16,7632	0,0226
	μ	-1,4634	1,5869	-6,2031	0,4771
μ		-8,2303	3,6544	-14,5793	-0,1173

* μ μ bootstrapping (5000 bootstrap μ).

4

Actor-Partner Interdependence Model:($n = 43$, $n = 86$ μ)

	Null		1		2				
	μ	t	μ	t	μ	t			
Intercept	271.307	11.356	23.89***	273.403	8.773	31.16***	274.664	9.075	30.26***
μ , actor ()				-3.184	0.551	5.77***	-3.107	0.561	5.53***
μ , partner ()							-0.965	0.558	1.72
μ , actor ()									
μ , actor () x									
μ , actor ()									
-2 x log		999.428				925.694			880.046
- 2 x log						73.734			45.648
df			1				1		
μ									
1 (μ)		5074.35				4592.247			4560.955
2 ()		2967.64				850.499			896.846

μ . *** $p < .001$, ** $p < .01$, * $p < .05$

4 (..)

Actor-Partner Interdependence Model:(= 43 , = 86 μ)

	3		4	
	μ	t	μ	t
Intercept	273.214	7.636	274.063	34.93***
, actor ()	-2.341	0.531	-1.535	0.76
, partner ()	-0.611	0.507	-0.609	1.20
μ , actor ()	-3.148	0.687	-3.128	4.51***
, actor () x			-0.019	0.41
μ , actor ()				
-2 x log	862.009		861.846	
- 2 x log	18.037		0.163	
df	1		1	
μ				
1 (μ)	4046.846		4098.812	
2 ()	218.776		155.052	

μ . *** $p < .001$, ** $p < .01$, * $p < .05$

5

Actor-Partner Interdependence Model:($n = 43$, $n = 86$ μ)

	Null		1		2				
	μ	t	μ	t	μ	t			
Intercept	271.307	11.356	23.89***	271.611	10.073	26.96***	274.664	9.075	30.26***
, actor ()				-1.580	0.648	2.43*	-0.965	0.558	1.72
, partner ()							-3.107	0.561	5.53***
μ , partner ()									
, partner () x									
μ , partner ()									
-2 x log	999.428			953.835			880.046		
- 2 x log				45.593			73.789		
df			1			1			
μ									
1 (μ)	5074.354			7017.931			4560.955		
2 ()	2967.635			620.686			896.846		

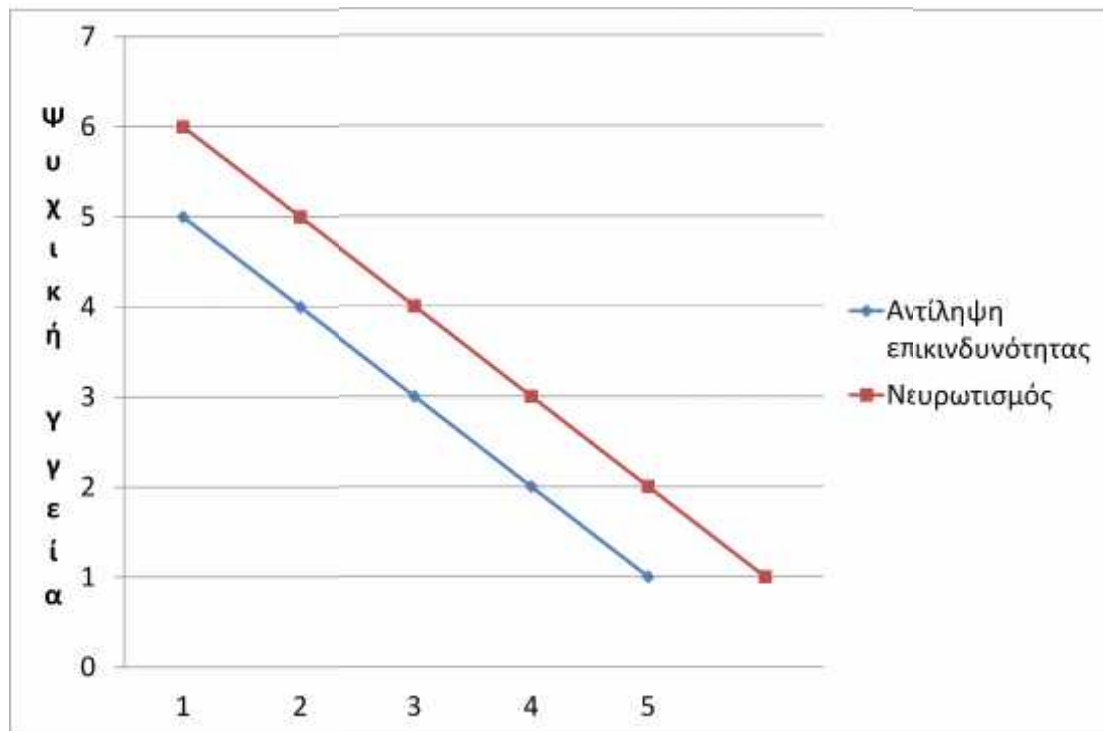
μ . *** $p < .001$, ** $p < .01$, * $p < .05$

5 (..)

Actor-Partner Interdependence Model:(= 43 , = 86 μ)

	3			4		
		μ	t		μ	t
Intercept	273.214	7.636	35.77***	272.749	8.083	33.74***
, actor ()	-0.611	0.507	1.20	-0.616	0.507	1.21
, partner ()	-2.341	0.531	4.40***	-2.325	0.538	4.32***
μ , partner ()	-3.148	0.687	4.58***	-3.130	0.693	4.51***
, partner () x				0.008	0.043	0.18
μ , partner ()						
-2 x log		862.009			861.978	
- 2 x log		18.037			0.031	
df	1			1		
μ						
1 (μ)		4046.846			4035.804	
2 ()		218.776			228.616	

μ . *** $p < .001$, ** $p < .01$, * $p < .05$



μ I.

μ

– , - μ (Costanzo, Lutgendorf, & Roeder, 2011). μ

μ

μ μ μ μ Karademas & Giannousi (2013).

μ μ μ μ μ μ

μ μ μ μ μ μ

μ , μ μ

« » (Hagedoorn et al., 2001.Germino, Fife, & Funk, 1995). μ (Hagger &

Orbell, 2003) μ (Karademas & Giannousi, 2013)

μ μ μ (Badr et al., 2010). μ , μ ,

μ (Karademas, Zarogiannos, & Karamvakalis, 2010).

μ , μ μ μ (Leventhal et al., 2005) μ

μ , μ

. μ μ μ
 . μ μ
 . μ , μ
 , μ μ , μ
 μ μ μ μ μ
 , μ μ μ , μ
 , , μ μ μ
 μ μ , μ
 μ μ (μ ,
 2010).

μ , μ μ μ
 μ , μ μ μ
 μ , (Dempster et al., 2012.
 Heijmans, 1999. Rozema, Vollnick, & Lechner, 2009. Dorrian, Dempster, & Adair,
 2009). μ
 , μ
 μ (μ
 μ) μ μ (Dempster et al.,
 2012).

, μ μ
 μ μ μ ,
 μ μ μ
 μ (Gould, Brown, &
 Bramwell, 2010. Costanzo, Lutgendorf, Bradley, Rose, & Anderson, 2006).

μ μ
 μ , μ μ ,
 μ μ . Gould et al. (2010)
 μ , μ
 μ μ , μ
 μ μ ,

μ μ μ μ
 (Aarstad et al., 2012). μ
 μ μ
 , μ μ .
 , μ μ μ
 μ μ
 (Christensen et al., 2002. Brickman et al., 1996).
 μ
 μ μ μ μ
 μ μ μ μ
 (Hooker et al., 1998. Patrick & Hayden, 1999), μ
 (μ) μ
 μ μ , μ μ μ
 (Ferrario, Zotti, Massara, & Nuvolone, 2003).
 , μ μ
 μ μ
 (Millar et al., 2005). μ ,
 μ (Williams, Watts,
 Macleod, & Mathews, 1997) μ
 μ (Farragher, 1998).
 μ μ
 μ μ μ μ .
 μ μ μ μ
 . μ
 ,
 μ μ (Millar et al.,
 2005). μ μ
 μ μ , μ .

μ μ , μ μ .

μμ μ μ

μ , , μ

μ . μ

, μ μ μ

(Boutin, 2007. Zaza, Sellick, & Hillier, 2005).

μ μ μ -

μ μμ μ ,

μ ,

μ (Cimprich, Janz, Northouse, Wren, Given, & Given, 2005) μ μ « »

« ».

, μ

μ , μ

, μ μ ,

μ

(Deimling et al., 2006).

μ

, μμ μ μ μ μ

μ ,

.

8.5

μ μ μ ,

.

, μ , μ μ
 μ μ μ μ
 . μ μ
 , / . μ μ ,
 , μ
 μ μ , ,
 .
 , μ μ . μ 43
 (Maas & Hox, 2005)
 μ μ - ,
 μ μ
 μ . , μ μ ,
 μ - μ
 μ .
 , μ μ μμ
 μ μ . μ
 μ μ μ μ
 μ ,
 μ μμ
 μ . ,
 μ μ -
 - . , μ
 μ
 μμ μ μ
 μ μ , μ μ
 . μ
 μ μμ
 μ μ
 μ μ
 μ . , μ

-
- Aarstad, A. K. H., Aarstad, H. J., & Olofsson, J. (2008). Personality and choice of coping predict quality of life in head and neck cancer patients during follow-up. *Acta Oncologica, 47*, 879-890.
- Aarstad, A. K. H., Beisland, E., & Aarstad, H. J. (2012). Personality, choice of coping and T stage predict level of distress in head and neck cancer patients during follow-up. *European Archives of Oto-Rhino-Laryngology, 269*, 2121-2128.
- Aldwin, C. M., Spiro, I. A., Levenson, M. R., & Cupertino, A. P. (2001). Longitudinal findings from the normative aging study: III. Personality, individual health trajectories, and mortality. *Psychology and Aging, 16*, 450-465.
- American Cancer Society, & Eddy, D. (1980). *Guidelines for the cancer related checkup: Recommendations and rationale*. American Cancer Society.
- American Psychiatric Association. (1994). *Diagnostic and statistical manual of mental disorders* (4th ed.). Washington, DC: Author.
- Anagnostopoulos, F., Niakas, D., & Pappa, E. (2005). Construct validation of the Greek SF-36 health survey. *Quality of Life Research, 14*, 1959-1965.
- Andersen, B. L., Kiecolt-Glaser, J. K., & Glaser, R. (1994). A biobehavioral model of cancer stress and disease course. *The American Psychologist, 49*, 389-404.
- Andersen, B. L., Farrar, W. B., & Golden-Kreutz, D. M. (2004). Psychological, behavioural, and immune changes after a psychological intervention: A clinical trial. *Journal of Clinical Oncology, 22*, 3568-3580.
- Andersen, B. L., & Simonelli, L. E. (2007). Cancer: General. In S. Ayers, A. Baum, C. McManus, S. Newman, K. Wallston, J. Weinman, & R. West (Eds.), *Cambridge handbook of psychology health and medicine-second edition* (2nd ed., pp. 584-591). New York: Cambridge University Press.
- Atkinson, R. L., Atkinson, R. C., Smith, E. E., & Noler-Hoeksema, S. (2000). *Hilgard's Introduction to Psychology* (13th ed.). Orlando, Florida: Harcourt College Publishers.

- Badr, H., Carmack, C. L., Kashy, D. A., Cristofanilli, M., & Revenson, T. A. (2010). Dyadic coping in metastatic breast cancer. *Health Psychology, 29*, 169-180.
- Badr, H., & Carmarck Taylor, C. L. (2006). Social constraints and spousal communication in lung cancer. *Psycho-Oncology, 15*, 673-683.
- Baider, L., Uziely, B., & Kaplan De-Nour, A. (1994). Progressive muscle relaxation and guided imagery in cancer patients. *General Hospital Psychiatry, 16*, 340-347.
- Bandura, A. (1997). *Self-efficacy: The exercise of control*. Freeman: New York.
- Bansal, M., Mohanti, B. K., Shah, N., Chandhry, R., Bahadur, S., & Shukla, N. K. (2004). Radiation related morbidities and their impact on quality of life in head and neck cancer patients receiving radical radiotherapy. *Quality of Life Research, 13*, 481-488.
- Beanlands, H. J., Lipton, J. H., McCay, E. A., Schimmer, A. D., Elliot, M. E., Messner, H. A., & Devins, G. M. (2003). Self-concept as a "BMT patient", illness intrusiveness, and engulfment in allogenic bone marrow transplant recipients. *Journal of Psychosomatic Research, 55*, 419-425.
- Beasley, M., Thompson, T., & Davidson, J. (2003). Resilience in response to life stress: The effects of coping style and cognitive hardiness. *Personality and Individual Differences, 34*, 77-95.
- Ben-Zur, H., Gilbar, O., & Lev, S. (2001). Coping with breast cancer: Patient, spouse and dyad models. *Psychosomatic Medicine, 63*, 32-39.
- Bendelow, G., Williams, S. J., & Oakley, A. (1996). Knowledge and beliefs about health and cancer prevention: The views of young people. *Health Education, 6*, 23-32.
- Benyamini, Y., Gozlan, M., & Kokia, E. (2009). Women's and men's perceptions of infertility and their associations with psychological adjustment: A dyadic approach. *British Journal of Health Psychology, 14*, 1-16.
- Berg, C. A., Wiebe, D. J., Butner, J., Bloor, L., Bradstreet, C., Upchurch, R., Hayes, J., Stephenson, R., Nail, L. & Patton, G. (2008). Collaborative coping and

- daily mood in couples dealing with prostate cancer. *Psychology & Aging*, 23, 505-516.
- Bishop, G. D., & Converse, S. A. (1986). Illness representations: A prototype approach. *Health Psychology*, 5, 95-114.
- Bjorklund, M., & Fridlund, B. (1999). Cancer patients' experience of nurses' behavior and health promotion activities: A critical incident analyses. *European Journal of Cancer Care*, 8, 204-212.
- Blanks, R. G., Moss, S. M., McGaham, C. E., Quinn, M. J., & Babb, P. J. (2000). Effect of NHS breast screening programme on mortality from breast cancer in England and Wales, 1990-8. Comparison of observed with predicted mortality. *British Medical Journal*, 321, 665-669.
- Bleiker, E. M. A., Hendriks, J. H. C. L., Otten, J. D. M., Verbeek, A. L. M., van der Ploeg, H. M. (2008). Personality factors and breast cancer risk: A 13-year follow-up. *Journal of the National Cancer Institute*, 100, 213-218.
- Bookwala, J., Schulz, R. (1998). The role of neuroticism and mastery in spouse caregivers' assessment of and response to a contextual stressor. *Journals of Gerontology- Series B Psychological Sciences and Social Sciences*, 53B, 155-164.
- Boutin, D. L. (2007). Effectiveness of cognitive behavioral and supportive-expressive group therapy for women diagnosed with breast cancer: A review of the literature. *Journal for Specialists in Group Work*, 32, 267-284.
- Brickman, A. L., Yount, S. E., Blaney, N. T., Rothberg, S. T., & De-Nour, A. (1996). Personality traits and long-term health status. The influence of neuroticism and conscientiousness on renal deterioration in type-1 diabetes. *Psychosomatics*, 37, 459-468.
- Briss, P., Rimer, B., Reilley, B., Coates, R. C., Lee, N. C., Mullen, P., Corso, P., Hutchinson, A. B., Hiatt, R., et al (2004). Promoting informed decisions about cancer screening in communities and healthcare systems. *American Journal of Preventive Medicine*, 26, 67-80.

- Broadbent, E., Petrie, K. J., Main, J., & Weinman, J. (2006). The brief illness perception questionnaire. *Journal of Psychosomatic Research, 60*, 631-637.
- Cameron, L. D., & Leventhal, H. (2003). *The self-regulation of health and illness behavior*. London: Routledge.
- Cameron, L. D., Booth, R. J., Schlatter, M. S., Ziginskis, D., Harman, J., & Benson, S. R. C. (2005). Cognitive and affective determinants of decisions to attend a group psychosocial support program for women with breast cancer. *Psychosomatic Medicine, 67*, 584-589.
- Cameron, L. D., Booth, R. J., Schlatter, M., Ziginskis, D., & Harman, J. (2007). Changes in emotion regulation and psychological adjustment following use of a group psychosocial support program for women recently diagnosed with breast cancer. *Psycho-Oncology, 16*, 171-180.
- Cameron, L. D., & Chan, K. Y. (2008). Designing health communications: Harnessing the power of affect, imagery, and self-regulation. *Social and Personality Psychology Compass, 2*, 262-282.
- Cameron, L. D., & Jago, L. (2008). Emotion regulation interventions: A common-sense model approach. *British Journal of Health Psychology, 13*, 215-221.
- Cantor, S. B., Volk, R. J., Cass, A. R., Gilani, J., & Spann, S. J. (2002). Psychological benefits of prostate cancer screening: The role of reassurance. *Health Expectations, 5*, 104-113.
- Carver, C. S., Pozo, C., Harris, S. D., Noriega, V., Scheier, M. F., Robinson, D. S., Ketcham, A. S., Moffat, Jr., Frederick, L., Clark, K. C. (1993). How coping mediates the effect of optimism on distress: A study of women with early stage breast cancer. *Journal of Personality and Social Psychology, 65*, 375-390.
- Christensen, A. J., Ehlers, S. L., Wiebe, J. S., Moran, P. J., Raichle, K., & Ferneyhough, K., (2002). Patient personality and mortality: A 4-year prospective examination of chronic renal insufficiency. *Health Psychology, 21*, 315-320.

- Cohen, S., Frank, E., Doyle, W. J., Skoner, P. D., Rabin, B. S., & Gwaltney, J. M. Jr. (1998). Types of stressors that increase susceptibility to the common cold in health adults. *Journal of Personality and Social Psychology, 17*, 214-223.
- Cook, M., Young, A., Taylor, D., & Bedford, A. P. (1998). Personality correlates of alcohol consumption. *Personality and Individual Differences, 24*, 641-647.
- Costanzo, E. S., Lutgendorf, S. K., Bradley, S. L., Rose, S. L., & Anderson, B. (2005). Cancer attributions, distress, and health practices among gynecologic cancer survivors. *Psychosomatic Medicine, 67*, 972-980.
- Costanzo, E. S., Lutgendorf, S. K., & Roeder, S. L. (2011). Common-sense beliefs about cancer and health practices among women completing treatment for breast cancer. *Psycho-Oncology, 20*, 53-61.
- Cimprich, B., Janz, N. K., Northouse, L., Wren, P. A., Given, B., & Given, C. W. (2005). Taking CHARGE: A self-management program for women following breast cancer treatment. *Psycho-Oncology, 14*, 704-717.
- Davis, J., Lee, D., Jarvis, K., Zorbas, H., & Redman, S. (2003). Public health information programmes: Can partnerships reduce costs? *Health Education, 103*, 352-362.
- Deary, I. J., Wilson, J. A., & Kelly, S. W. (1995). Globus pharyngis, personality and psychological distress in the general population. *Psychosomatics, 36*, 570-577.
- Deimling, G. T., Wagner, L. J., Bowman, K. F., Sterns, S., Kercher, K., & Kahana, B. (2006). Coping among older adult long term cancer survivors. *Psycho-Oncology, 15*, 143-159.
- Dempster, M., McCorry, N. K., Brennan, E., Donnelly, M., Murray, L., Johnston, B. T. (2012). Psychological distress among survivors of esophageal cancer: The role of illness cognitions and coping. *Diseases of the Esophagus, 25*, 222-227.
- Denollet, J. (2005). DS14: Standard assessment of negative affectivity, social inhibition, and type D personality. *Psychosomatic Medicine, 67*, 89-97.
- Denollet, J., Schiffer, A. A., & Spek, V. (2010). A general propensity to psychological distress affects cardiovascular outcomes: Evidence from

- research on the type D (distressed) personality profile. *Circulation. Cardiovascular Quality and Outcomes*, 3, 546-557.
- Department of Health and Human Services (2012). Agency for toxic substances and disease registry. *Cancer Fact Sheet*. Retrieved from <http://www.atsdr.cdc.gov>
- Diabetes Control and Complications Trial Research Group. (1993). The effect of intensive treatment of diabetes on the development and progression of long-term complications in insulin-dependent diabetes mellitus. *New England Journal of Medicine*, 329, 977-986.
- Diefenbach, M. A., & Leventhal, H. (1996). The common-sense model of illness representation: Theoretical and practical considerations. *Journal of Social Distress and the Homeless*, 5, 11-38.
- Digman, J. M. (1990). Personality structure: Emergence of the five-factor model. *Annual Review of Psychology*, 41, 414-440.
- Dorrian, A., Dempster, M., & Adair, P. (2009). Adjustment to inflammatory bowel disease: The relative influence of illness perceptions and coping. *Inflammatory Bowel Diseases*, 15, 47-55.
- Dorval, M., Guay, S., Mondor, M., Masse, B., Falardeau, M., & Robidoux, A. (2005). Couples who get closer after breast cancer: Frequency and predictors in prospective investigation. *Journal of Clinical Oncology*, 23, 3588-3596.
- Epping-Jordan, J. E., Compas, B. E., Osowiecki, D. M., Oppedisano, G., Gerhardt, C., Primo, K., Krag, D. N. (1999). Psychosocial adjustment in breast cancer: Processes of emotional distress. *Health Psychology*, 18, 315-326.
- Erwin, D. O., Ivory, J., Stayton, C., Willis, M., Jandorf, L., Thompson, H., Womack, S., & Hurd, T. C. (2003). Replication and dissemination of a cancer education model for African American women. *Cancer Control*, 10, 13-21.
- Fan, S-Y., Eiser, C., Ho, M-C., & Lin, C-Y. (2013). Health-related quality of life in patients with hepatocellular carcinoma: The mediation effects of illness perceptions and coping. *Psycho-Oncology*, 22, 1353-1360.

- Farragher, B. (1998). Psychiatric morbidity following the diagnosis and treatment of early breast cancer. *Irish Journal of Medical Sciences*, *167*, 166-169.
- Ferrario, R. S., Zotti, A. M., Massara, G., & Nuvolone, G. (2003). A comparative assessment of psychological and psychosocial characteristics of cancer patients and their caregivers. *Psycho-Oncology*, *12*, 1-7.
- Ferlay, J., Soerjomataram, I., Ervik, M., Dikshit, R., Eser, S., Mathers, C., Rebelo, M., Parkin, D.M., Forman, D., Bray, F. (2012). *GLOBOCAN v1.0, Cancer Incidence and Mortality Worldwide: IARC CancerBase No. 11* [Internet]. Lyon, France: International Agency for Research on Cancer; 2013. Available from: <http://globocan.iarc.fr>, accessed on 16/6/2014.
- Folkman, S., Lazarus, R. S., Dunkel-Schetter, C., DeLongis, A., & Gruen, R. J. (1986). Dynamics of a stressful encounter. Cognitive appraisal, coping encounter outcomes. *Journal of Personality and Social Psychology*, *50*, 992-1003.
- Foster, C., Wright, D., Hill, H., Hopkinson, J., & Roffe, L. (2009). Psychosocial implications of living 5 years or more following a cancer diagnosis: A systematic review of the research evidence. *European Journal of Cancer Care*, *18*, 223-247.
- French, D. P., Maissi, E., & Marteau, T. M. (2004). Psychological costs of inadequate cervical smear results. *British Journal of Cancer*, *91*, 1887-1892.
- Germino, B. B., Fife, B. L., & Funk, S. G. (1995). Cancer and the partner relationship: What is its meaning? *Seminars in Oncology Nursing*, *11*, 43-50.
- Given, B. A., Given, C. W., & Kozachik, S. (2001). Family support in advanced cancer. *Cancer Journals for Clinicians*, *51*, 213-224.
- Gould, R. V., Brown, S. L., & Bramwell, R. (2010). Psychological adjustment to gynaecological cancer: Patients' illness representations, coping strategies and mood disturbance. *Psychology and Health*, *25*, 633-646.

- Grant, S., & Langan-Fox, J. (2006). Occupational stress, coping and strain: The combined/ interactive effect of the big five traits. *Personality and Individual Differences, 41*, 719-732.
- Grossarth-Maticek, R., & Eysenck., H. J. (1990). Personality, stress and disease: Description and validation of a new inventory. *Psychological Reports, 66*, 355-373.
- Gross, J. J. (1999). Emotion and emotion regulation. In L. A. Pervin (Ed.), *Handbook of personality: Theory and research* (2nd ed., pp. 525-552). New York: Guilford Press.
- Hansen, P. E., Floderus, B., Frederiksen, K., & Johansen, C. (2005). Personality traits, health behavior, and risk for cancer: A prospective study of swedish twin court. *Cancer, 103*, 1082-1091.
- Hagger, M., & Orbell, S. (2003). A meta-analytic review of the common sense model of illness representations. *Psychology and Health, 18*, 141-184.
- Hagedoorn, M., Sanderman, R., Bolks, H N., Tuinstra, J., & Coyne, J. C. (2008). Distress in couples coping with cancer: A meta-analysis and critical review of role and gender effects. *Psychological Bulletin, 134*, 1-30.
- Hagedoorn, M., Sanderman, R., Ranchor, A., Brilman, E. I., Kempen, G. I. J. M., Ormel, J. (2001). Chronic disease in elderly couples: Are women more responsive to their spouse's health conditions than men? *Journal of Psychosomatic Research, 51*, 693-696.
- Hagedoorn, M., Buunk, B., Kuijjer, R., Wobbes, T. & Sandermann, R. (2000). Couples dealing with cancer: Role and gender differences regarding psychological distress and quality of life. *Psycho-Oncology, 9*, 232-242.
- Harrington, C. B., Hansen, J. A., Moskowitz, M., Todd, B. L., & Feuerstein, M. (2010). It's not over when it's over: Long-term symptoms in cancer survivors – a systematic review. *International Journal of Psychiatry in Medicine, 40*, 163-181.

- Hay, J. L., McCaul, K. D., & Magnan, R. (2006). Does worry about breast cancer predict screening behaviors? A meta-analysis of the prospective evidence. *Preventive Medicine, 42*, 401-408.
- Heijmans, M. (1998). Coping and adaptive outcome in chronic fatigue syndrome: Importance of illness cognitions. *Journal of Psychosomatic Research, 45*, 39-51.
- Heijmans, M., & De Ridder, D. (1998). Assessing illness representations of chronic illness: Explorations of their disease-specific nature. *Journal of Behavioral Medicine, 21*, 485-403.
- Heijmans, M. (1999). The role of patients' illness representations in coping and functioning with Addison's disease. *British Journal of Health Psychology, 4*, 137-149.
- Helgeson, V. S., & Cohen, S. (1996). Social support and adjustment to cancer: Reconciling descriptive, correlational, and intervention research. *Health Psychology, 15*, 135-148.
- Hislop, T. G., Waxler, N. E., Coldman, A. J., Elwood, M., & Kan, L. (1987). The prognostic significance of psychosocial factors in women with breast cancer. *Journal of Chronic Diseases, 40*, 729-735.
- Hodges, L. J., Humphris, G. M., & Macfarlane, G. (2005). A meta-analytic investigation of the relationship between the psychological distress of cancer patients and their carers. *Social Science and Medicine, 60*, 1-12.
- Hooker, K., Monahan, D. J., Bowman, S. R., Frazier, L. D., & Shifren, K. (1998). Personality counts for a lot: Predictors of mental and physical health of spouse caregivers in two disease groups. *Journals of Gerontology- Series B Psychological Sciences and Social Sciences, 53B*, 73-85.
- Horsburgh, M. E. (1999). Self-care of well adult Canadians and adult Canadians with end stage renal disease. *International Journal of Nursing Studies, 36*, 443-453.

- Horsburgh, M. E., Beanlands, H., Locking-Cusolitto, H., Howe, A., & Watson, D. (2000). Personality traits and self care in adults awaiting renal transplantation. *Western Journal of Nursing Research*, 22, 407-437.
- Husson, O., Denollet, J., Oerlemans, S., & Mols, F. (2013). Satisfaction with information provision in cancer patients and the moderating effect of type D personality. *Psycho-Oncology*, 22, 2124-2132.
- Institute of Medicine (2001). *Coverage matters: Insurance and health care*. Washington, DC: National Academy Press.
- Jellesma, F. C. (2008). Health in young people: social inhibition and negative affect and their relationship with self-reported somatic complaints. *Journal of Developmental & Behavioral Pediatrics*, 29, 94-100.
- μ , . . (2005). : . :
- Karademas, E. C., & Giannousi, Z. (2013). Representations of control and psychological symptoms in couples dealing with cancer: A dyadic-regulation approach. *Psychology & Health*, 28, 67-83.
- Karademas, E.C., Zarogiannos, A., & Karamvakalis, N. (2010). Cardiac patient - spouse dissimilarities in illness perception: Associations with patient self-rated health and coping strategies. *Psychology & Health*, 25, 451-463.
- μ , . . , . , μ , . , , . , & . (2010). μ μ μ μ μ μ μ μ : μ . *Hellenic Journal of Psychology*, 7, 159-179.
- Kayser, K., Watson, L. E., & Andrade, J. T. (2007). Cancer as a «we-disease»: Examining the process of coping from a relational perspective. *Families, Systems, & Health*, 25, 404-418.
- Kenny, D. A. (1996). Models of nonindependence in dyadic research. *Journal of Social & Personal Relationships*, 13, 279-294.
- Kenny, D. A., Kashy, D. A. & Cook, W. L. (2006). *Dyadic data analysis*. New York: The Guilford Press.

- Kim, Y., Duberstein, P. R., Sorensen, S., & Larson, M. R. (2005). Levels of depressive symptoms in spouses of people with lung cancer: Effects of personality, social support, and caregiving burden. *Psychosomatics*, *46*, 123-130.
- King, K. B., Nail, L. M., Kreamer, D., Strohl, R. A., & Johnson, J. E. (1985). Patients' descriptions of the experience of receiving radiation therapy. *Oncology Nursing Forum*, *12*, 55-61.
- Kissen, D. M., & Eysenck, H. J. (1962). Personality in male lung cancer patients. *Journal of Psychosomatic Research*, *6*, 123-127.
- Kore, R. N., & Blacklock, A. R. (2000). American society of anesthesiologist physical status (ASA-PS): A predictor of treatment outcome of transurethral resection of the prostate (TURP). *Journal of the Royal College of Surgeons of Edinburg*, *45*, 25-28.
- Kornblith, A. B., Anderson, J., & Cella, D. F. (1990). Quality of life assessment of Hodgkin's disease survivors: A model for comparative care. *Oncology*, *4*, 93-101.
- Korotkov, D. (2008). Does personality moderate the relationship between stress and health behavior? Expanding the nomological network of the five-factor model. *Journal of Research in Personality*, *42*, 1418-1426.
- Kreitler, S., Chaitchik, S., Kreitler, H., Rapport, Y., & Algor, R. (1996). Cognitive orientation and quality of life in cancer survivors. *International Journal of Rehabilitation and Health*, *2*, 217-234.
- Lau, R. R., & Hartman, K. A. (1983). Common sense representations of common illnesses. *Health Psychology*, *2*, 167-185.
- Lau, R. R., Bernard, T. M., & Hartman, K. A. (1989). Further explorations of common-sense representations of common illness. *Health Psychology*, *8*, 195-219.
- Lazarus, R. S., & Folkman, S. (1984). *Stress, appraisal, and coping*. New York: Springer.

- Lebowitz, B. D., Pearson, J. L., Schneider, L. S., Reynolds, C. F. 3rd., Alexopoulos, G. S., Bruce, M. L., Conwell, Y., Katz, I. R., Meyers, B. S., Morrison, M. F., Mossey, J., Niederehe, G., & Parmelee, P. (1997). Diagnosis and treatment of depression in late life: Consensus statement update. *JAMA*, 278, 1186-1190.
- Lemogne, C., Consoli, S. M., Geffroy-Perez, B., Coeuret-Pellicer, M., Nabi, H., Melchior, M., Limosin, F., Zins, M., Ducimetiere, P., Goldberg, M., & Cordier, S. (2013). Personality and the risk of cancer: A 16-year follow-up study of the GAZEL cohort. *Psychosomatic Medicine*, 75, 262-271.
- Lemos-Giraldez, S., & Fidalgo-Aliste, A. M. (1997). Personality dispositions and health related habits and attitudes: A cross-sectional study. *European Journal of Personality*, 11, 197-209.
- Leventhal, H. (1990). Emotional and behavioural processes. In M. Johnston & L. Wallace (Eds.), *Stress and medical procedures* (pp. 25-57). Oxford: Oxford University Press.
- Leventhal, H., Halm, E., Horowitz, C., Leventhal, E. A., & Ozakinci, G. (2005). Living with chronic illness: A contextualized, self-regulation approach. In S. Sutton, A. Baum & M. Johnston (Eds.), *The sage handbook of health psychology* (pp. 197-240). Sage Publications.
- Leventhal, H., Nerenz, D., & Steele, D. (1984). Illness representations and coping with health threats. In A. Baum, S. Taylor, & J. Singer (Eds.), *Handbook of psychology and health* (pp. 219-252). Hillside: Elibaum.
- Lewis, F. M. (1986). The impact of cancer on the family- A critical analysis of the research literature. *Patient Education and Counseling*, 8, 269-289.
- Lillberg, K., Verkasalo, P. K., Kaprio, J., Helenius, H., & Koskenvuo, M. (2002). Personality characteristics and the risk of breast cancer: A prospective cohort study. *International Journal of Cancer*, 100, 361-366.
- Lillberg, K., Verkasalo, P. K., Kaprio, J., Teppo, L., Helenius, H., & Koskenvuo, M. (2002). A prospective study of life satisfaction, neuroticism and breast cancer risk (Finland). *Cancer Causes Control*, 13, 191-198.

- List, M. A., Rutherford, J. L., Stracks, J., Haraf, D., Kies, M. S., & Vokes, E. E. (2002). An exploration of the pretreatment coping strategies of patients with carcinoma of the head and neck. *Cancer, 95*, 98-104.
- Maas, C., & Hox, J. (2005). Multilevel analysis. *Encyclopedia of Social Measurement, 2*, 785-193.
- Manne, S., & Badr, H. (2008). Intimacy and relationship processes in couples' psychosocial adaptation to cancer. *Cancer, 112*, 2541-2555.
- Marshall, G. N., Wortman, C. B., Vickers, R. R., Kusulas, J. W., & Herving, L. K. (1994). The five-factor model of personality as a framework for personality-health research. *Journal of Personality and Social Psychology, 49*, 710-721.
- McCrae, R. R., & Terraciano, A. (2005). Universal features of personality traits from the observer's perspective: Data from 50 cultures. *Journal of Personality and Social Psychology, 88*, 547-561.
- McLane, L., Jones, K., Lydiatt, W., Lydiatt, D., & Richards, A. (2003). Taking away the fear: A grounded theory study of cooperative care in the treatment of head and neck cancer. *Psychooncology, 12*, 474-490.
- Millar, K., Purushotham, A. D., McLatchie, E., George, W. D., & Murray, G. D. (2005). A 1-year prospective study of individual variation in distress, and illness perceptions, after treatment for breast cancer. *Journal of Psychosomatic Research, 58*, 335-342.
- Mols, F., Holterhues, C., Nijsten, T., & van de Poll-Franse, L. V. (2010). Personality is associated with health status and impact of cancer among melanoma survivors. *European Journal of Cancer, 46*, 573-580.
- Mols, F., & Denollet, J. (2010a). Type D personality among noncardiovascular patient populations: A systematic review. *General Hospital Psychiatry, 32*, 66-72.
- Mols, F., & Denollet, J. (2010b). Type D personality in the general population: A systematic review of health status, mechanisms of disease, and work-related problems. *Health and Quality of Life Outcomes, 8*, 9.

- Mols, F., Thong, M. S. Y., van de Poll-Franse, L. V., Roukema, J. A., & Denollet, J. (2012). Type D (distressed) personality is associated with poor quality of life and mental health among 3080 cancer survivors. *Journal of Affective Disorders, 136*, 26-34.
- Mols, F., Denollet, J., Kaptein, A. A., Reemst, P. H. M., & Thong, M. S. Y. (2012). The association between type D personality and illness perceptions in colorectal cancer survivors: A study from the population-based PROFILES registry. *Journal of Psychosomatic Research, 73*, 232-239.
- Morrow, G. R., & Hickok, J. T. (1993). Behavioral treatment of chemotherapy-induced nausea and vomiting. *Oncology, 7*, 83-89.
- Morrow, G. R., Roscoe, J. A., Hickok, J. T., Andrews, P. L. R., & Matteson, S. (2002). Nausea and emesis: Evidence for biobehavioral perspective. *Support Care Cancer, 10*, 96-105.
- Moss-Morris, R., Petrie, K., & Weinman, J. (1996). Functioning in chronic fatigue syndrome: Do illness perceptions play a regulatory role? *British Journal of Health Psychology, 1*, 15-25.
- Moss-Morris, R., Weinman, J., Petrie, K. J., Horne, R., Cameron, L. D., & Buick, D. (2002). The revised illness perception questionnaire (IPQ-R). *Psychology and Health, 17*, 1-16.
- Mystakidou, K., Parpa, E., Tsilika, E., Galanos, A., & Vlahos, L. (2008). General perceived self-efficacy: Validation analysis in Greek cancer patients. *Support Care Cancer, 16*, 1317-1322.
- Nakaya, N., Hansen, P. E., Schapiro, I. R., Eplov, L. F., Saito-Nakaya, K., Uchitomi, Y., & Johansen, C. (2006). Personality traits and cancer survival: A Danish cohort study. *British Journal of Cancer, 95*, 146-152.
- Nakaya, N., Bidstrup, P. E., Salto-Nakaya, K., Frederiksen, K., Koskenvuo, M., Pukkala, E., Kaprio, J., Floderus, B., Uchitomi, Y., & Johansen, C. (2010). Personality traits and cancer risk and survival based on Finnish and Swedish registry data. *American Journal of Epidemiology, 172*, 377-385.

- Nakaya, N., Tsubono, Y., Hosokawa, T., Nishino, Y., Ohkubo, T., Hozawa, A., Shibuya, D., Fukudo, S., Fukao, A., Tsuji, I., & Hisamichi, S. (2003). Personality and the risk of cancer. *Journal of the National Cancer Institute*, *95*, 799-805.
- National Cancer Institute (2009). Cancer questions and answers. *NCI Fact Sheet*. Retrieved from <http://www.cancer.gov>
- Nguyen-Michel, S. T., Unger, J. B., Hamilton, J., & Spruijt-Metz, D. (2006). Associations between physical activity and perceived stress/hassles in college students. *Stress and Health*, *22*, 179-188.
- Nijboer, C., Tempelaar, R., Triemstra, M., van den Bos, G. A. M., & Sanderman, R. (2001). The role of social and psychologic resources in caregiving of cancer patients. *Cancer*, *91*, 1029-1039.
- OECD (2007). *Health at a Glance 2007: OECD Indicators*, OECD Publishing.
DOI: [10.1787/health_glance-2007-en](https://doi.org/10.1787/health_glance-2007-en)
- Pakenham, K. I. (2005). Benefit finding in multiple sclerosis and associations with positive and negative outcomes. *Health Psychology*, *24*, 123-132.
- Patel, S., & Pakenham, K. I. (2011). Benefit finding in multiple sclerosis and associations with positive and negative outcomes. *Health Psychology*, *30*, 70-76.
- Patrick, J. H., & Hayden, J. M. (1999). Neuroticism, coping strategies, and negative well-being among caregivers. *Psychology Aging*, *14*, 273-283.
- Perkins, D. O., Davidson, E. J., Leserman, J., Liao, D., & Evans, D. L. (1993). Personality disorder in patients infected with HIV: A controlled study with implications for clinical care. *The American Journal of Psychiatry*, *150*, 309-315.
- Petrie, K. J., & Weinman, J. A. (1997). *Perceptions of health and illness: Current research and applications*. Amsterdam: Harvard Academic Publishers.

- Phipps, S. (2002). Reduction of distress associated with paediatric bone marrow transplant: Complementary health promotion interventions. *Pediatric Rehabilitation, 5*, 223-234.
- Pitcealthy, C., & Maguire, P. (2003). The psychological impact of cancer on patients' partners and other key relatives: A review. *European Journal of Cancer, 39*, 1517-1524.
- Preacher, K. J., & Hayes, A. F. (2004). SPSS and SAS procedures for estimating indirect effects in simple mediation models. *Behavior Research Methods, Instruments, & Computers, 36*, 717-731.
- Preacher, K. J., & Hayes, A. F. (2008). Asymptotic and resampling strategies for assessing and comparing indirect effects in multiple mediator models. *Behavior Research Methods, 40*, 879-891.
- Rabins, P. V., Fitting, M. D., Eastham, J., & Fetting, J. (1990). The emotional impact of caring for the chronically ill. *Psychosomatics, 31*, 331-336.
- Rachman, S. (1998). *Anxiety*. Hove: Taylor and Francis.
- Rashbash, J., Browne, W., Healy, M., Cameron, B., & Charlton, C. (2000). *MLwiN (Version 2.30): Interactive software for multilevel analysis*. London: Multilevel Models Project, Institute of Education, University of London.
- Ratcliffe, M. A., Dawson, A. A., & Walker, L. G. (1995). Eysenck personality inventory L-scores in patients with Hodgkin's disease and non-Hodgkin's lymphoma. *Psychooncology, 4*, 39-45.
- Redd, W. H., Montgomery, G. H., & DuHamel, K. N. (2001). Behavioral intervention for cancer treatment side effects. *Journal of the National Cancer Institute, 93*, 810-823.
- Reid, B. C., Alberg, A. J., Klassen, A. C., Koch, W. M., Samet, J. M. (2001). The American society of anesthesiologists' class as a co-morbidity index in a cohort of head and neck cancer surgical patients. *Head Neck, 23*, 985-994.

- Rehse, B., & Pukrop, R. (2003). Effects of psychosocial interventions on quality of life in adult cancer patients: Meta-analysis of 37 published controlled outcome studies. *Patient Education and Counseling, 50*, 179-186.
- Reis, M. F., Andres, D., Gold, D. P., Markiewicz, D., & Gauthier, S. (1994). Personality traits as determinants of burden and health complaints in caregiving. *International Journal of Aging and Human Development, 39*, 257-271.
- Rimer, B. K., Briss, P. A., Zeller, P.K., Chan, E. C. Y., & Woolf, S. H. (2004). Informed decision making: What is its role in cancer screening? *Cancer, 101*, 1214-1228.
- Rozema, H., Vollnick, T., & Lechner, L. (2009). The role of illness representations in coping and health of patients treated for breast cancer. *Psycho-Oncology, 18*, 849-857.
- Rutter, C. L., & Rutter, D. R. (2002). Illness representation, coping and outcome in irritable bowel syndrome (IBS). *British Journal of Health Psychology, 7*, 377-391.
- Saklofske, D. H., Austin, E. J., Galloway, J., & Davidson, K. (2007). Individual difference correlates of health-related behaviors: Preliminary evidence for links between emotional intelligence and coping. *Personality and Individual Differences, 42*, 491-502.
- Sears, S. R., Stanton, A. L., & Danoff-Burg, S. (2003). The yellow brick road and the emerald city: Benefit finding, positive reappraisal coping and posttraumatic growth in women with early-stage breast cancer. *Health Psychology, 22*, 487-497.
- Scharloo, M., Baatenburg de Jong, R. J., Langeveld, T. P. M., van Velzen-Verkaik, E., Doorn-op den Akker, M. M., & Kaptein, A. A. (2005). Quality of life and illness perceptions in patients with recently diagnosed head and neck cancer. *Head and Neck, 27*, 857-863.

Schapiro, I. R., Ross-Petersen, L., Saelan, H., Garde, K., Olsen, J. H., & Johansen, C. (2001). Extroversion and neuroticism and the associated risk of cancer: A Danish cohort study. *American Journal of Epidemiology*, *153*, 757-763.

μ , . (1998). . : University Studio Press.

Stanton, A. L., & Snyder, P. R. (1993). Coping with a breast cancer diagnoses: A prospective study. *Health Psychology*, *22*, 487-497.

Smith, R. A., Cokkinides, V., & Eyre, H. J. (2003). American cancer society guidelines for the early detection of cancer, 2003. *CA: A Cancer Journal for Clinicians*, *53*, 27-43.

Smith, R. A., Cokkinides, V., & Eyre, H. J. (2006). American cancer society guidelines for the early detection of cancer, 2006. *CA: A Cancer Journal for Clinicians*, *56*, 11-25.

Smith, T. W., & Williams, P. G. (1992). Personality and health: Advantages and limitations of the five-factor model. *Journal of Personality*, *60*, 395-423.

Stein, K. D., Syrjala, K. L., & Andrykowski, M. A. (2008). Physical and psychological long-term and late effects of cancer. *Cancer*, *112*, 2577-2592.

Stiegelis, H. E., Ranchor, A. V., & Sanderman, R. (2004). Psychological functioning in cancer patients treated with radiotherapy. *Patient Education & Counseling*, *52*, 131-141.

Stommel, M., Kurtz, M. E., Given, C. W., & Given, B. A. (2004). A longitudinal analysis of the course of depressive symptomatology in geriatric patients with cancer of the breast, colon, lung, or prostate. *Health Psychology*, *23*, 564-573.

Taskila, T., & Lindbohm, M. L. (2007). Factors affecting cancer survivors' employment and work ability. *Acta Oncologica*, *46*, 446-451.

Taylor, S. E. (2006). Tend and befriend: Biobehavioral bases of affiliation under stress. *Current Directions in Psychological Science*, *15*, 273-277.

- Taylor, S. E., Repetti, R. L., & Seeman, T. (1997). Health psychology: What is an unhealthy environment and how does it get under the skin? *Annual Review of Psychology, 48*, 411-447.
- Tsaousis, I., & Kerpelis, P. (2004). The traits personality questionnaire 5 (TPQue5). *European Journal of Psychological Assessment, 20*, 180-191.
- Walker, M. S., Ristvedt, S. L., & Haughey, B. H. (2003). Patients care in multidisciplinary cancer clinics: Does attention to psychosocial needs predict patient satisfaction? *Psychooncology, 12*, 291-300.
- Tedeschi, R. G., & Calhoun, L. G. (1996). The Posttraumatic Growth Inventory: Measuring the positive legacy of trauma. *Journal of Traumatic Stress, 9*, 455-472.
- Trask, P. C., Paterson, A., Riba, M., Brines, B., Griffith, K., Parker, P.,... & Ferrera, J. (2002). Assessment of psychological distress in prospective bone marrow transplant patients. *Bone Marrow Transplantation, 29*, 917-925.
- Trobst, K. K., Herbst, J. H., Masters, H. L. III, & Costa, P. T. Jr. (2002). Personality pathways to unsafe sex: Personality, condom use and HIV risk behaviors. *Journal of Research in Personality, 36*, 117-133.
- Ussher, J. M., Wong, W. K. T., Perz, J. (2010). A qualitative analysis of changes in relationship dynamics and roles between people with cancer and their primary informal carer. *Health, 15*, 650-667.
- Ussher, J. M., & Sandoval, M. (2008). Gender differences in the construction and experience of cancer care: The consequences of the gendered positioning of carers. *Psychology and Health, 23*, 945-963.
- Weisman, A. D., & Worden, J. W. (1976). The existential plight in cancer: Significance of the first 100 days. *International Journal of Psychiatry in Medicine, 7*, 1-15.
- Williams, J. M. G., Watts, F. M., Macleod, C., & Mathews, A. (1997). *Cognitive psychology and emotional disorders (2nd ed.)*. Chichester: Wiley.

- Williamson, G. M., & Schaffer, D. R. (2001). Relationship quality and potentially harmful behaviors by spousal caregivers: How we were then, how we are now. *Psychology Aging, 16*, 217-226.
- Williamson, G. M., & Schulz, R. (1995). Caring for a family member with cancer: Past communal behavior and affective reactions. *Journal of Applied Social Psychology, 25*, 93-116.
- Winer, E. P., & Sutton, L. M. (1994). Quality of life after bone marrow transplantation. *Oncology, 8*, 19-31.
- Ybema, J. F., Kuijer, R. G., Buunk, B. P., DeJong, G. M., & Sanderman, R. (2001). Depression and perceptions of inequity among couples facing cancer. *Personality and Social Psychology Review, 27*, 3-13.
- Zahlis, E. H., & Shandis, M. E. (1991). Breast cancer: Demands of illness of the patients partner. *Journal of Psychosocial Oncology, 9*, 75-93.
- Zaza, C., Sellick, S. M., & Hillier, L. M. (2005). Coping with cancer: What do patients do? *Journal of Psychosocial Oncology, 3*, 55-73.